



PRO 5

302098

Dims: 12.5' L x 5' w

Weight: 300 lbs.

Weight capacity: 1,500 lbs.



PRO 6

302096

Dims: 12.5' L x 6' w

Weight: 350 lbs.

Weight capacity: 1,800 lbs.



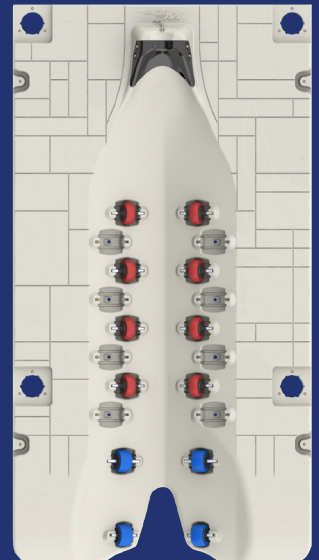
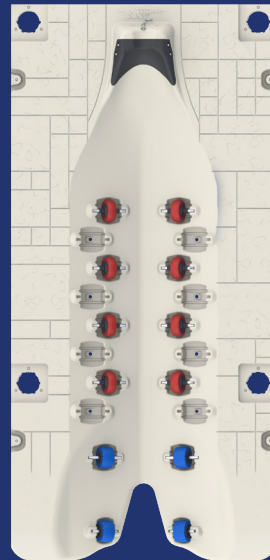
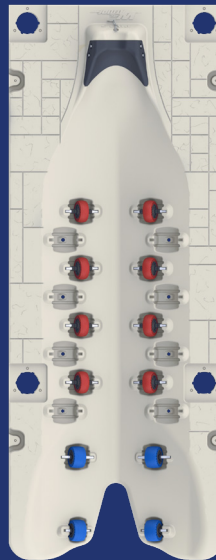
PRO WB

302400

Dims: 12.5' L x 6.5' w

Weight: 380 lbs.

Weight capacity: 2,250 lbs.



Wave Armor Pro Ports: The Original Gold Standard in Floating Drive On Ports.

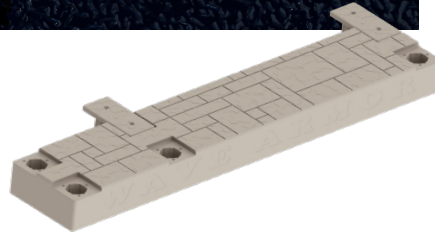
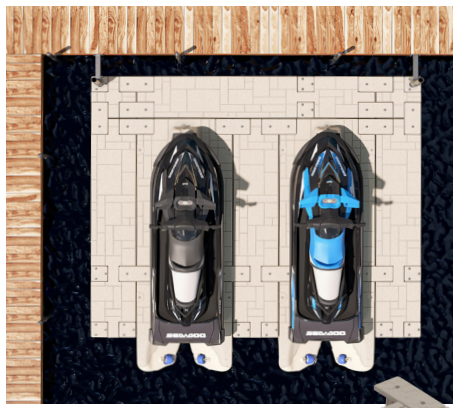
- Patented design. Easy drive-on and drive-off functionality. Gradual entrance allows for a seamless and flat ride, eliminating jarring motions. Deeper midsection design effortlessly accommodates PWCs with deeper hulls.
- Strategically positioned, super soft bumper-like wheels to allow a soft, smooth, worry free loading experience. Wheel pockets designed for perfect alignment and optimal hull protection every time.
- Pro line of connectors and attachments for seamless integration with your waterfront setup.
- Molded-in bow stop, paired with a robust stainless steel clip and chain, guarantees secure positioning.
- Crafted with an incredibly durable rotomolded shell, fully filled with marine-grade EPS foam, offering maintenance-free high-density polyethylene construction.
- The PRO Wide Body offers additional walk-around space by expanding the width to 80".





PROTECT'R™ CANOPY NEW!
10' X 13' PRO 5 PORT
FOR (2) PRO 5 PORTS SIDE BY SIDE
302698

Dims: 10' W × 13' L



PRO SIDE EXTENSION DECK WITH CONNECTIONS
302472

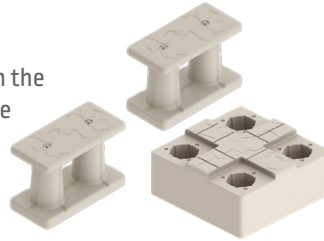
Side Extension deck can be connected to the side of any Pro Series port or in front of 2 Pro 6's. If a front extension is required on a pair of Pro 5's, then you need to add an extra extension deck in the middle of both ports.

- Dims: 144.5" L × 27.5" W × 12" H
- Works with Pro, Pro Maxx and Pro Wide Body ports
- Includes (1) side extension, (1) set of port-to-port connectors 302102
- Note: Cover unused mounting holes with Pro Cap #302151 and Pro Cap Filler #302414 to avoid injury (not included)

PRO CORNER DECK
302473

The Pro Corner Deck was designed to be used in conjunction with the Pro Side Extension Deck 302472 when extra room is desired in the front of the Pro ports.

- Dims: 27.5" L × 27.5" W × 12" H
- (1) corner, (1) set of port connectors 302102



PRO PORT TO PORT CONNECTION KIT

302102

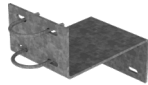
- Includes 2



PORT TO FIXED DOCK KIT

301281 FOR 2" PIPE

301282 FOR 4" PIPE



- (2) Z-brackets, (4) U-bolts + hardware included
- Requires 2" or 4" pipe sleeves sold separately

TELESCOPING 8-12" PORT TO FIXED DOCK OR SEAWALL KIT

301883 FOR 2" PIPE

301884 FOR 4" PIPE



- (2) adjustable aluminum brackets, (2) U-bolts + hardware included
- Requires 2" or 4" pipe sleeves sold separately



PRO CAP FILLER

302414 QTY 4

302415 QTY 24

Covers unused mounting pockets.

PRO PORT PIPE SLEEVE

302128 2"

302152 3"



- Bolt-on design
- 2 pipe sleeves + hardware included

PRO SIDE POST ATTACHMENT KIT

302649 2"

302650 3"



- 12" H
- Includes 2 + hardware



PRO PORT BOLT ON CAP

302151 • Includes 2

PRO PORT FRONTPIPE MOUNT

302411 2" 302412 3" 302768 4"

- Hardware included
- Can be used in combination w/ other brackets



PRO PORT SIDE CONNECTION TO FLOATING DOCK KIT

302507

- Includes 1 + hardware



PRO PORT TO WAVE DOCK KIT

302196

- Includes 2 + hardware



PRO PORT SIDE CONNECTION TO WAVE DOCK KIT

302365

- Includes 1 + hardware



PRO PORT TO FLOATING DOCK KIT

302197 19.75" C-CHANNEL

302198 25.75" C-CHANNEL

- Includes 2 + hardware

