

### SLX 5

301890

Dims: 12.5' L x 5' w

Weight: 286 lbs.

Weight capacity: 1500 lbs.



### SLX 6

301891

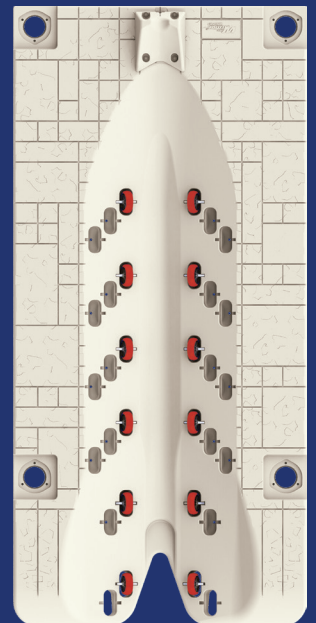
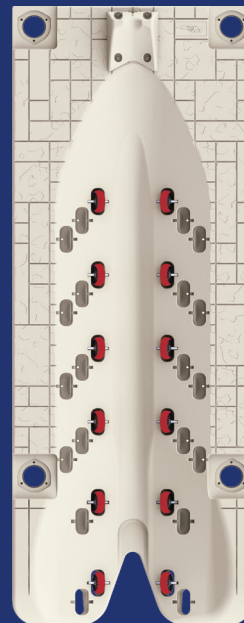
Dims: 12.5' L x 6' w

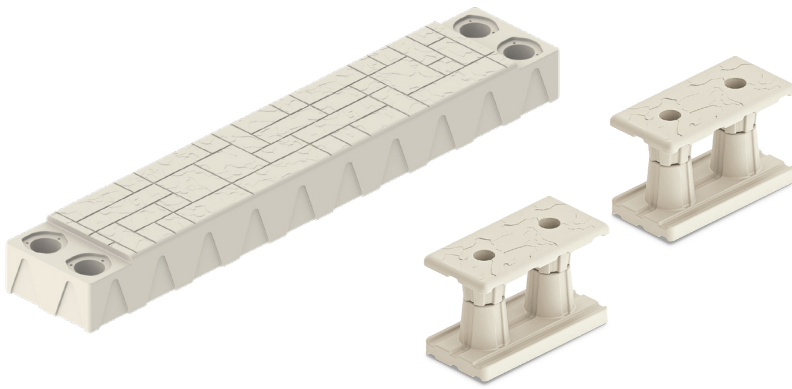
Weight: 321 lbs.

Weight capacity: 1800 lbs.

SLX Series ports: The original easy drive on/roll off design, changed industry standards with independent wheel system, admired for over 10 years running for ease of use and versatility.

- Designed to integrate with Wave Armor floating dock system, installed as a stand-alone system, or connect with other floating dock brands and structures.
- Integrated side pontoons, molded-in direct connect pockets, removable bow stop with tie-down ring, variety of mounting options, 12 adjustable shock-absorbing wheels.
- Crafted with an incredibly durable rotomolded shell, fully filled with marine-grade EPS foam, offering maintenance-free high-density polyethylene construction.

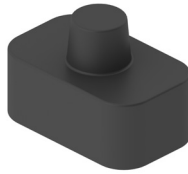




**SLX SIDE EXTENSION KIT**  
**300115 MSRP \$915**

Adds 22" of extra walking room on the side of the SLX port.  
 Dims: 22" W x 120" L x 12" H  
 Weight: 132 lbs.  
 Weight capacity: 400 lbs.  
 • Includes 1 side extension + 2 port to port connectors

**SLX PORT BUOYANCY BOOSTER**  
**300498**



- Includes 2
- Adds 40 lbs. buoyancy per booster

**SLX PORT TO PORT CONNECTION KIT**  
**300046**



- Includes 2

**SNAP-IN CAP**  
**300116**



- Includes 2

**SLX POST EXTENSION KIT**  
**300095 FOR 2" PIPE**  
**300096 FOR 4" PIPE**



- Includes 2 + hardware

**SLX WHEEL KIT**  
**301929**



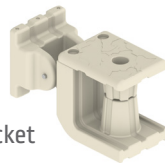
- Includes 1 Wheel
- 1 Axle
- 2 Washers

**STAINLESS STEEL CHAIN & CLIP**  
**301269**



Secure your port with this stainless steel chain & clip.

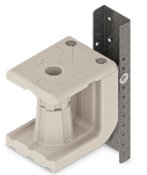
**SLX PORT TO WAVE DOCK FLEX CONNECTION KIT**  
**301915**



Two heavy duty poly brackets attached to receiving bracket that slides in to the H-Beam channel for simple install. Allows for hinged-like movement during wave action.

- Includes 2 + hardware

**SLX PORT TO FLOATING DOCK KIT**  
**301308 19.75" C-CHANNEL**  
**301309 25.75" C-CHANNEL**

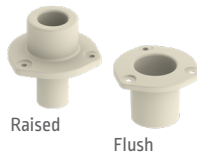


Two heavy duty poly brackets attach to the galvanized C-Channel for securing to any floating dock structure.

- Set of 2
- Hardware NOT included

**PIPE SLEEVES**

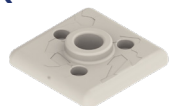
**300103 RAISED FOR 2" PIPE**  
**301011 FLUSH FOR 3" PIPE**  
**300041 FLUSH FOR 4" PIPE**



Replaceable pipe sleeves accommodate 2", 3" and 4" pipes and are engineered to absorb the everyday wear and tear associated with pipe mount installations.

- 2 pipe sleeves + hardware included

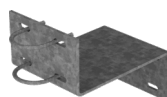
**2" SQUARE PIPE SLEEVE KIT FOR SLX**  
**302202 MSRP \$85**



Designed to perfectly fit into recessed pipe mounting holes in all 4 corners of the SLX. Creates a flush surface and accommodates 2" pipes for port installation.

- 2 pipe sleeves + hardware included

**PORT TO FIXED DOCK KIT**  
**301281 FOR 2" PIPE**  
**301282 FOR 4" PIPE**



- [2] Z-brackets, [4] U-bolts + hardware included
- Requires 2" or 4" pipe sleeves sold separately

**TELESCOPING 8-12" PORT TO FIXED DOCK OR SEAWALL KIT**  
**301883 FOR 2" PIPE**  
**301884 FOR 4" PIPE**



- [2] adjustable aluminum brackets, [2] U-bolts + hardware included
- Requires 2" or 4" pipe sleeves sold separately