

SPORT

301901

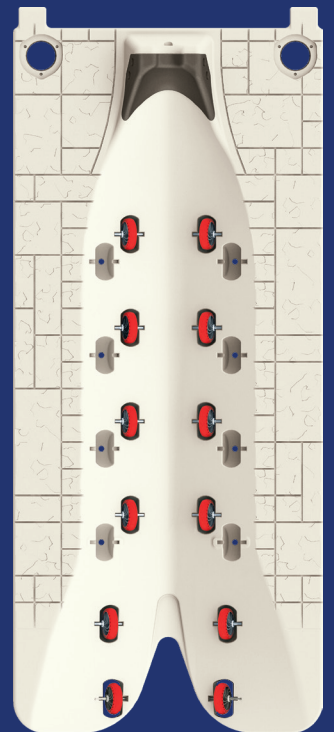
Dims / 11' L x 5' W

Weight / 180 lbs.

Weight capacity / 700 lbs.

Sport port is specifically designed for smaller, lightweight PWCs or stand up models.

- Features molded in direct connection pockets allowing it to be mounted as close as possible to the dock creating the cleanest look.
- The Sport can stand alone, connect to the Wave Armor dock system or to other floating dock brands utilizing one of our PWC port connection kits (sold separately).
- Crafted with an incredibly durable rotomolded shell, fully filled with marine-grade EPS foam, offering maintenance-free high-density polyethylene construction.





**SPORT
BOLT-IN CAP
301514**

Cover unused mounting pockets.

- Includes 2 + hardware



**STAINLESS STEEL
CHAIN & CLIP
301269**

Secure your port with this stainless steel chain & clip.



**SPORT WHEEL KIT
301929**

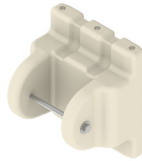
Additional wheel for your Wave Port SLX 5, SLX 6, and Sport ports manufactured after Fall 2021.

- 1 Wheel
- 1 Axle
- 2 Washers [Qty 1]

**SPORT TO WAVE DOCK KIT
301347**

This one piece receiving bracket slides directly in to the H-Beam channel of a Wave Armor dock section.

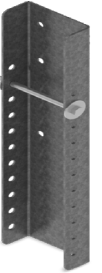
- Includes 2 + hardware



**SPORT TO FLOATING DOCK KIT
301360 MSRP \$175**

This universal galvanized C-channel connection bracket provides an easy mount to other floating docks or floating structures.

- Includes (2) 25.75" C-channel brackets
- Additional hardware required for mounting to the structure is not included

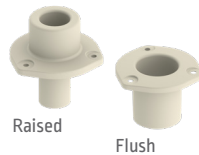


PIPE SLEEVES

300103 RAISED FOR 2" PIPE

301011 FLUSH FOR 3" PIPE

300041 FLUSH FOR 4" PIPE



Replaceable pipe sleeves accommodate 2", 3" and 4" pipes and are engineered to absorb the everyday wear and tear associated with pipe mount installations.

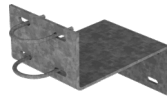
- 2 pipe sleeves + hardware included

PORT TO FIXED DOCK KIT

301281 FOR 2" PIPE

301282 FOR 4" PIPE

- (2) Z-brackets, (4) U-bolts + hardware included
- Requires 2" or 4" pipe sleeves sold separately



**TELESCOPING 8-12" PORT TO
FIXED DOCK OR SEAWALL KIT**

301883 FOR 2" PIPE

301884 FOR 4" PIPE

- (2) adjustable aluminum brackets, (2) U-bolts + hardware included
- Requires 2" or 4" pipe sleeves sold separately

